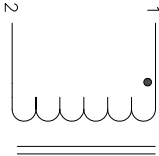


The information contained in this drawing is the sole property of Coil Winding Specialist Inc. (CWS). Any reproduction in part or whole without written permission of CWS Coil Winding Specialist is prohibited.

DIMENSIONAL TOLERANCE INCHES (MM)					
A(OD) MAX	B (HEIGHT) MAX	C (LEAD LENGTH) NOM	C1 (TINNED) NOM	D(Ø LEAD) TYP	P REF
3.35 [85.00]	3.94 [100.00]	0.24 [6.00]	0.24 [6.00]	0.28 [7.00]	2.91 [74.00]

REVISION HISTORY			
REV	ECN	DESCRIPTION	SIGN & DATE
A		PRODUCTION RELEASE	BY DATE CHK DATE TN 09/28/21 JL 09/28/21



SCHEMATIC

7 BUILT TO RoHS COMPLIANCE.

6 LABEL PART NUMBER AND REVISION

POSITION LEADS AS REQUIRED

REMOVE WIRE INSULATION AND TIN

WIND COILS EVENLY SPACED

5 CONSTRUCTION:

4 WEIGHT: 1652 GRAMS TYPICAL

HI-POT WINDING-TO-CORE 1250 V AC, 10 SEC
INTERWINDING CAPACITANCE = 160pF TYPICAL @ SRF
|Z| = 6 kΩ TYPICAL @ SRF
SRF = 1.40 MHz TYPICAL
MAX TEMP. RISE @ IDC 50 AMP, LESS THAN 60°C WITH SOME AIRFLOW
DCR = 3.0 mΩ MAX

INDUCTANCE @ 0 AMP = 110uH±10% (LESS THAN 10% RIPPLE)
TEST FREQUENCY: 1.0 kHz ; TEST VOLTAGE: 250mV
RATED MAX. CURRENT = 100 AMPS RMS ; FREQUENCY: 1kHz
OPERATING TEMPERATURE RANGE : -40°C TO 180°C
AMBIENT TEMPERATURE RANGE: -40°C TO 120°C
SPECIFICATIONS @ 25°C

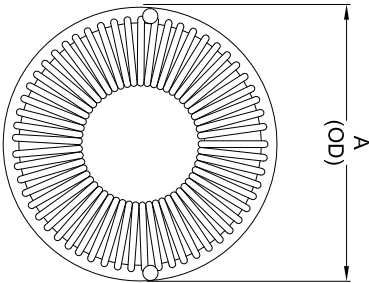
2 WIRE: UL RATED CLASS 200°C
CORE: HIGH TEMP POWDERED CORE

1 RATING UL-CLASS H (180°C) REQUIRED
MATERIAL: UL RECOGNIZED FLAMMABILITY

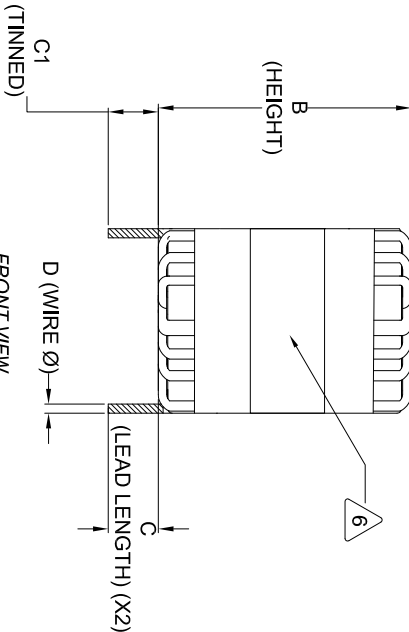
ANY TOLERANCE. THIS DIM. CAN VARY A LITTLE FROM PART TO PART.

"TYP" IN DIM. TOL. TABLE REFERS TO A NON-CRITICAL TYPICAL (AVERAGE) DIM. WITHOUT

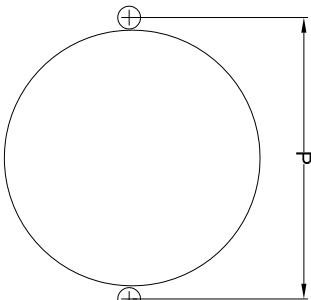
NOTES: UNLESS OTHERWISE SPECIFIED, READ NOTES FROM BOTTOM TO UP.



TOP VIEW



FRONT VIEW



MOUNTING HOLE PATTERN (TOP VIEW)

DC BIAS TABLE	
DC BIAS (AMP)	L _S @1kHz (REF)
0	105 uH
10	105 uH
20	104 uH
30	104 uH
40	100 uH
50	98 uH
60	95 uH
70	92 uH
80	87 uH
90	80 uH
100	77 uH

AUTOCAD		SOLIDWORKS		SIGN		DATE		TITLE:		www.coilws.com		CWS Coil Winding Specialist	
DRAWN		TN		09/28/21		09/28/21		POWER INDUCTOR		100uH, 100Amp, Horizontal		353 West Grove Ave	
CHECKED		JM		09/28/21		09/28/21		SIZE		DWG. NO.		Orange, California 92865 (CAGE 50ME2)	
ENGR.		TN		09/28/21		09/28/21		APPR.		JL		09/28/21	
SCALE		N/A		SHEET		1		OF		1		REV	
DO NOT SCALE DRAWING		ANGLE PROJECTION		X1=1.38		X2=1.38		X3=1.38		X4=1.38		X5=1.38	
TOLERANCE INCHES:		X1=0.005		X2=0.005		X3=0.005		X4=0.005		X5=0.005		X6=0.005	
TOLERANCE METRICS:		X1=0.127		X2=0.127		X3=0.127		X4=0.127		X5=0.127		X6=0.127	
UNLESS OTHERWISE SPECIFIED		DIMENSIONING AND		TOLERANCE PER ANSI Y14.5M		ALL DIMENSIONS ARE IN INCHES		AND (MILLIMETERS)		DO NOT SCALE DRAWING		DO NOT SCALE DRAWING	
DRAWN		TN		09/28/21		09/28/21		09/28/21		09/28/21		09/28/21	
CHECKED		JM		09/28/21		09/28/21		09/28/21		09/28/21		09/28/21	
ENGR.		TN		09/28/21		09/28/21		09/28/21		09/28/21		09/28/21	
APPR.		JL		09/28/21		09/28/21		09/28/21		09/28/21		09/28/21	